



Healthcare

# TLC Healthcare International RS Aero Class 2026 Victorian Sailing Championships



SAILING INSTRUCTIONS

7<sup>th</sup>- 9<sup>th</sup> March 2026



## 1 RULES

Rules are listed in the NOR.

## 2 CHANGES TO SAILING INSTRUCTIONS

- 2.1 Any change to the Sailing Instructions will be posted on the Official Regatta Notice Board not less than one hour before the race or races affected.
- 2.2 Any change to the format or schedule of races will be posted by 1900hrs on the day before it will take effect.

## 3 COMMUNICATIONS WITH COMPETITORS

- 3.1 The Official Notice Board is located online here: <https://sailingresults.net/sa/notice/?ID=82193>.
- 3.2 All protests, scoring enquiries and equipment change requests shall be submitted via the ONB and resulting notices posted online.
- 3.3 The Regatta Office is located downstairs in the SSCBC clubhouse (Sailing Centre).

## 4 SIGNALS MADE ASHORE

- 4.1 Signals made ashore will be displayed on the flag mast near the Jetty.
- 4.2 When flag AP is displayed ashore, '1 minute' is replaced with 'not less than 30 minutes' in the race signal AP.

## 5 SCHEDULE

- 5.1 The proposed schedule is as per below:

Date	Event	Time
Friday 6 <sup>th</sup> Mar 2026	Welcome Drinks SSCBC Fort Room	1700hrs
Saturday 7 <sup>th</sup> Mar 2026	Registration Competitors' Briefing Leave Beach First Warning Signal Sausage Sizzle with Tips and Tricks on Western Lawn	0830 – 1000 hrs 1100 hrs 1200 hrs 1230 hrs After racing
Sunday 8 <sup>th</sup> Mar 2026	Egg and Bacon Roll Competitor Briefing Leave Beach First Warning Signal Presentation & Prize Giving	0800 hrs 0900 hrs 1000 hrs 1030 hrs After racing, if event has been completed
Monday 9 <sup>th</sup> Mar 2026	Competitor Briefing Leave Beach First Warning Signal Presentation & Prize Giving	0900 hrs 1000 hrs 1030 hrs After racing

- 5.2 On the last scheduled day of racing, no warning signal will be made after 1600 hrs.
- 5.3 A maximum of 4 races may be sailed in one day.
- 5.4 One day during the regatta (Monday if feasible) will be designated as a Lay Day. The Lay Day will be determined by the Organising Authority based on weather forecasts and competitors will be advised of the Lay Day no later than 1800 hours the day before it comes into effect.

## 6 CLASS FLAG

- 6.1 The RS Aero class flags will be:  
 RS Aero 5: RS Aero insignia and number 5 in black on a blue background  
 RS Aero 6: RS Aero insignia and number 6 in black on a purple background  
 RS Aero 7: RS Aero insignia and number 7 in black on a yellow background  
 RS Aero 9: RS Aero insignia and number 9 in black on a pink background

## 7 RACING AREA

- 7.1 Addendum A shows the approximate location of the racing area.

## 8 THE COURSES

- 8.1 The diagrams and associated notes in Addendum B show the courses and marks, the order in which marks are to be passed, and the side on which each mark is to be left.
- 8.2 Marks 1, 2, 3, 4 and 5 are to be rounded to port.
- 8.3 No later than the warning signal, the race committee vessel will indicate the course to be sailed by displaying the course code and may display the approximate magnetic compass bearing from the starting line to the top mark.

## 9 MARKS

- 9.1 The starting mark will be an orange inflatable conical mark.
- 9.2 The finish mark will be a blue inflatable cylindrical mark.
- 9.3 Marks 1, 2 will be pink inflatable conical marks.
- 9.4 Marks 3, 4 and 5 will be yellow inflatable conical marks.
- 9.5 Replacement or relocated marks as provided for in section 10.2 will be orange inflatable conical marks.

## 10 THE START

- 10.1 Races will be started using a 3-minute starting sequence. This changes RRS 26.

Signal	Flag	Sound	Minutes before start signal
Warning	Class Flag	1 sound	3
Preparatory	Preparatory flag	1 sound	2
One- minute	Preparatory flag removed	1 long sound	1
Starting	Starting Class flag removed	1 sound	0

- 10.2 To alert boats that a race starting sequence will begin soon, an orange flag will be displayed from the race committee vessel with one sound signal at least five minutes before a warning signal is made.
- 10.3 The starting line will be between a staff displaying an orange flag on the race committee vessel at the starboard end and the course side of the port end starting mark.
- 10.4 [DP] Where reasonably practicable, boats whose warning signal has not been made shall avoid the starting area during the starting sequence for other classes and avoid interfering with boats racing.

The starting area is defined as a rectangle 50 meters from the starting line and marks in all directions.

- 10.5 A boat that does not start within 4 minutes after her starting signal will be scored Did Not Start without a hearing. This changes RRS 35, A4, A5.1 and A5.2.
- 10.6 Class fleets may be started in any order and the following fleets will be started together: 5 and 7; 6 and 9.

## **11 CHANGE TO THE NEXT LEG OF THE COURSE**

- 11.1 The race committee may change the position of the next mark in accordance with RRS 33, subject to the amendments detailed in this clause.
- 11.2 When the next leg of the course is changed, the race committee shall lay a new mark as described in SI 8.5 and remove the original mark as soon as practicable.

## **12 THE FINISH**

The finishing line will be between a staff displaying a blue flag on the race committee vessel and the course side of the finish mark positioned on the port side of the finish boat.

## **13 TIME LIMITS AND TARGET TIMES**

- 13.1 Time limits and target times are as follows:

<b>Class</b>	<b>Race Target Time</b>	<b>Race Time Limit</b>	<b>Finishing window</b>
RS Aero 5,6,7 & 9	40 minutes	70 minutes	15 minutes

- 13.2 There are no time limits for reaching the first mark.
- 13.3 The Finishing Window is the time for boats to finish after the first boat sails the course and finishes.
- 13.4 Boats which are still deemed to be racing by the Race Committee but will not finish within the Finish Window may be scored an allocated place based on their position at that time. Such boats may be directed to return to the start area or other location without crossing the finish line. Neither the allocation of a finish place nor the failure to allocate a finish place will be grounds for redress. This changes RRS 35, 61.1(a), A4, A5.1, A5.2.
- 13.5 Boats failing to finish within the time stated in the Finish Window after the first boat starts, sails the course and finishes will be scored Did Not Finish, except as provided for in SI 12.4. This changes RRS 35, RRS Appendix A5.1 and A5.2.
- 13.6 Failure to meet the Target Time will not be grounds for redress. This changes RRS 61.1(a).

## **14 PROTESTS AND REQUESTS FOR REDRESS**

- 14.1 Protests and requests for redress shall be submitted via the link on the Official Notice Board.
- 14.2 The protest time limit is 60 minutes after the last boat has finished the last race of the day or the race committee signals no more racing today, whichever is later.
- 14.3 Notices shall be posted no later than 30 minutes after the protest time limit to inform competitors of hearings in which they are parties or named as witnesses.
- 14.4 Notices of protests by the Race Committee, Technical Committee or Jury will be posted to inform boats under RRS 61.1(b).
- 14.5 Hearings will be held in the protest room, located in the Tower of the SSCBC Clubhouse, and will commence at the time posted.

## **15 ARBITRATION & POST RACE PENALTY**

Appendix T shall apply.

## **16 [NP] SAFETY REGULATIONS**

- 16.1 [DP] Rule 40.1 applies at all times afloat. (PFDs)
- 16.2 Before leaving to race on each scheduled race day or session, the skipper shall sign on using the sign-on-sheets in the regatta office.
- 16.3 After each scheduled race day or session, the skipper shall sign off using the same method.

- 16.4 The sign on period for each Class will close at the warning signal being displayed for the first race of that session on that day.
- 16.5 The sign off period for each Class will close 60 minutes after the last boat has completed the last race of the session.
- 16.6 [SP] Failure to Sign On, Sign Off will result in that boat receiving a 2-point penalty. However, no boat shall be scored worse than DSQ. For boats failing to sign on, this penalty will be applied to the first race of the session. For boats failing to sign off, this penalty will be applied to the last race of the session. If there is only one race in a session, a boat will only receive one penalty.
- 16.7 Boats not leaving the beach for a scheduled race shall promptly notify the Regatta Office.
- 16.8 [DP] A boat that retires from racing shall notify the Race Committee before leaving the racing area, or, if that is not reasonable, shall notify the Regatta Office as soon as possible after returning ashore and shall complete a retirement declaration form at the Regatta Office before the expiry of the protest time limit.

## **17 [DP] REPLACEMENT OF EQUIPMENT**

Substitution of damaged or lost equipment will not be allowed unless authorised by the race committee. Requests for equipment substitution shall be made in writing to the race officer at the first reasonable opportunity.

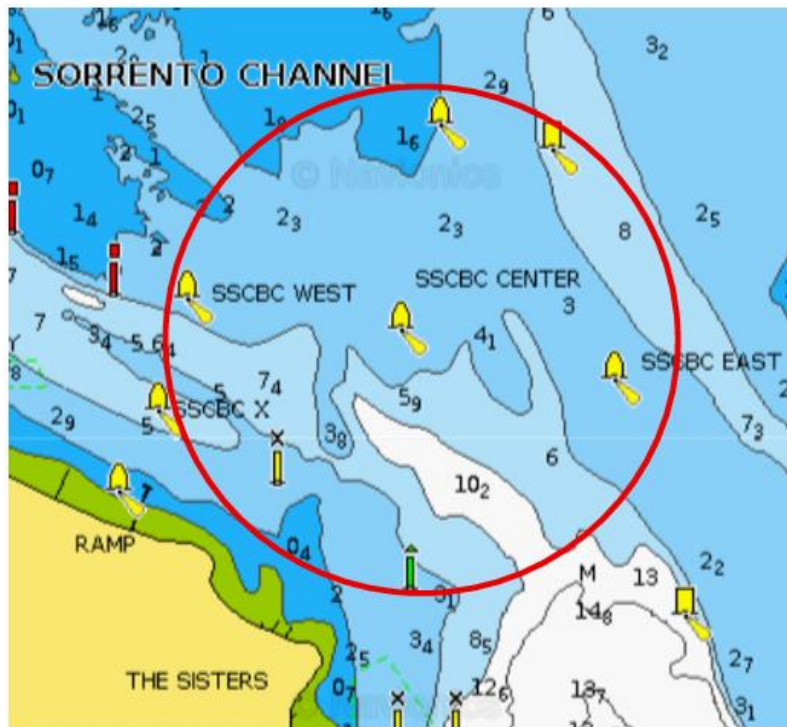
## **18 SUPPORT BOATS**

- 18.1 Coaches and support boats must remain at least 100m outside the start area, the course and all racing areas from the time of the first warning signal each day until racing has concluded for that day.
- 18.2 If called upon by the race officer, support boats must assist in an emergency as directed, and must maintain a watch on VHF Channel 73.

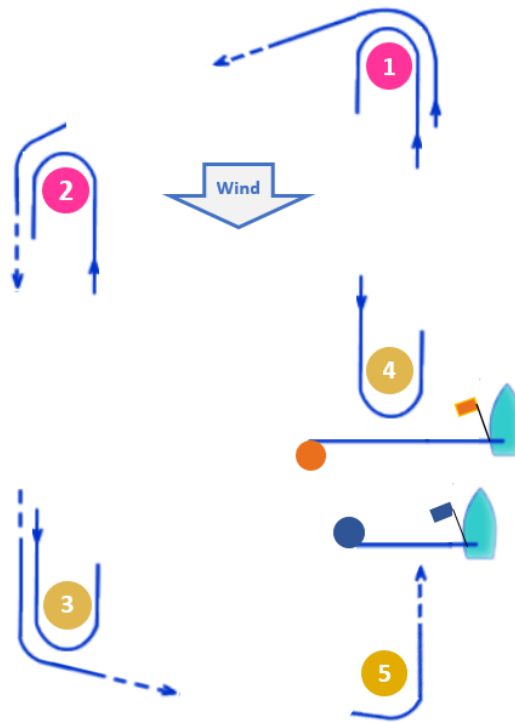
## **19 TRASH DISPOSAL**

Trash may be placed aboard support or official boats.

## ADDENDUM A – RACING AREA



## ADDENDUM B - COURSES



### COURSE DESCRIPTIONS

Course Code	Mark Rounding Order
I2	Start – 1 – 4 – 1 – 2 – 3 – 5 – Finish
O2	Start – 1 – 2 – 3 – 2 – 3 – 5 – Finish